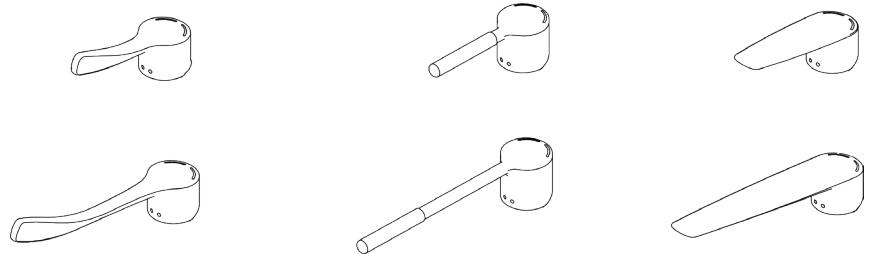


GalvinAssist® Handles



CHROME FINISH

113.35.11.00 - Long Flared Handle H&C - Black
 113.35.13.00 - Long Flared Handle H&C - Aqua Blue
 113.35.14.00 - Long Flared Handle H&C - Apple Green
 113.35.15.00 - Long Flared Handle H&C - Ruby Red
 113.35.16.00 - Long Flared Handle H&C - Coral
 113.35.17.00 - Long Flared Handle H&C - Steel Blue

113.34.11.00 - Short Flared Handle H&C - Black
 113.34.13.00 - Short Flared Handle H&C - Aqua Blue
 113.34.14.00 - Short Flared Handle H&C - Apple Green
 113.34.15.00 - Short Flared Handle H&C - Ruby Red
 113.34.16.00 - Short Flared Handle H&C - Coral
 113.34.17.00 - Short Flared Handle H&C - Steel Blue

113.31.11.00 - Long Pin Handle H&C - Black
 113.31.13.00 - Long Pin Handle H&C - Aqua Blue
 113.31.14.00 - Long Pin Handle H&C - Apple Green
 113.31.15.00 - Long Pin Handle H&C - Ruby Red
 113.31.16.00 - Long Pin Handle H&C - Coral
 113.31.17.00 - Long Pin Handle H&C - Steel Blue

113.30.11.00 - Short Pin Handle H&C - Black
 113.30.13.00 - Short Pin Handle H&C - Aqua Blue
 113.30.14.00 - Short Pin Handle H&C - Apple Green
 113.30.15.00 - Short Pin Handle H&C - Ruby Red
 113.30.16.00 - Short Pin Handle H&C - Coral
 113.30.17.00 - Short Pin Handle H&C - Steel Blue

113.33.10.00 - Long Paddle Handle H&C
 113.33.20.00 - Long Paddle W&C

113.32.10.00 - Short Paddle Handle H&C
 113.32.20.00 - Short Paddle Handle W&C
 113.32.30.00 - Short Paddle Handle H&C - Inverted
 113.32.40.00 - Short Paddle Handle W&C - Inverted

BRUSHED CARBON FINISH

113.35.12.05 - Long Flared Handle H&C

113.34.12.05 - Short Flared Handle H&C

113.31.12.05 - Long Pin Handle H&C - White

113.30.12.05 - Short Pin Handle H&C - White

113.33.10.05 - Long Paddle Handle H&C

113.32.30.05 - Short Paddle Handle H&C - Inverted

SPECIFICATIONS

- Simple servicing and readily available parts.
- Quality controlled.

IMPORTANT:

WARNINGS: Special attentions to be paid on notes, photos, images, or drawings of assembly steps marked with the warning symbol.



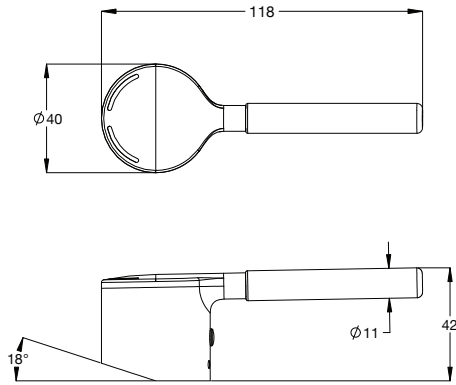
TECHNICAL DATA

Inlet		N/A
Outlet		N/A
Headworks		N/A
Working Pressure Range (kPa)	Min	N/A
	Max	N/A
Working Temperature Range (°C)	Min	N/A
	Max	N/A
Nominal Flow Rate (LPM)		N/A
Construction		Zinc
Finish		Chrome / Brushed Carbon
NOTE: Galvin Engineering continually strive to improve their products. Specifications may change without notice		

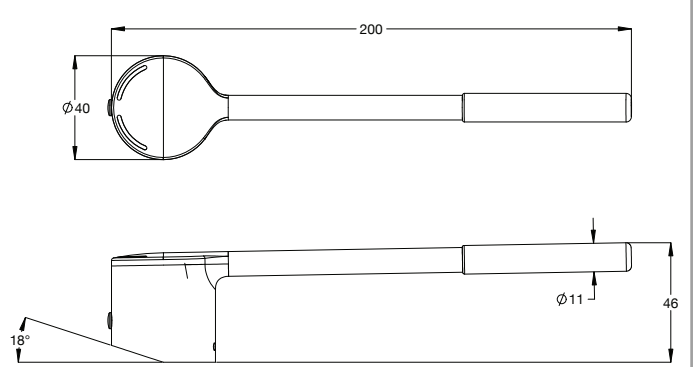
TOOLS REQUIRED

- Allen Key (Supplied)

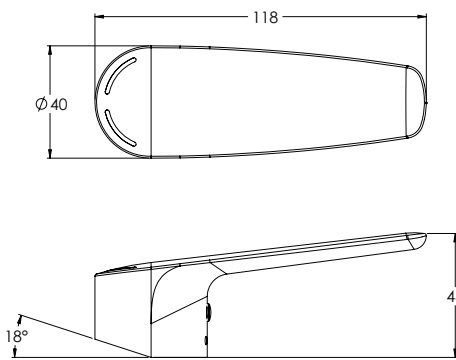
DIMENSIONS



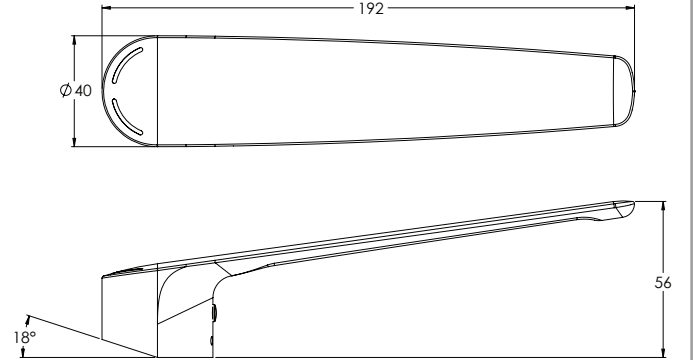
**113.30.1X.XX
 Short Pin Handle**



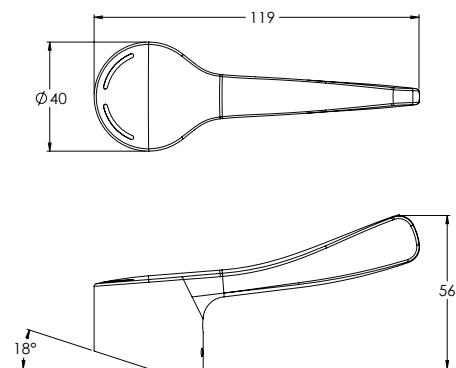
**113.31.1X.XX
 Long Pin Handle**



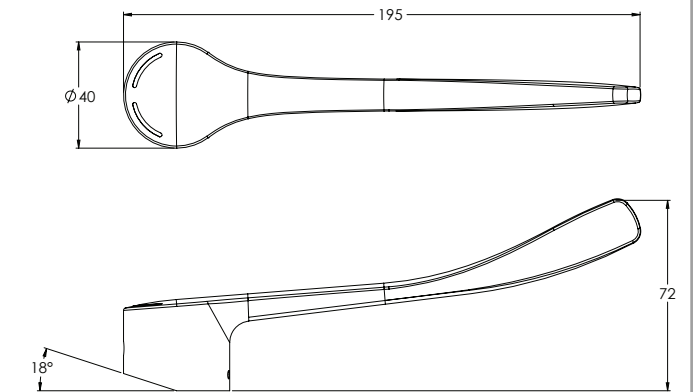
**113.32.1X.XX & 113.32.2X.XX
 Short Paddle Handle**



**113.33.1X.XX 113.33.2X.XX
 Long Paddle Handle**



**113.34.1X.XX
 Short Flared Handle**

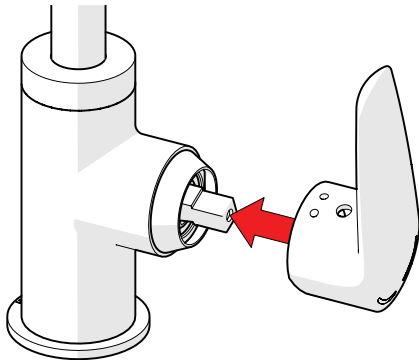


**113.35.1X.XX
 Long Flared Handle**

INSTALLATION

INSTALLATION COMPLIANCE: Galvin Engineering products must be installed in accordance with these installation instructions and in accordance with AS/NZS 3500, the PCA and your local regulatory requirements. Water and/or electrical supply conditions must also comply to the applicable national and/or state standards. Failing to comply with these provisions shall void the product warranty and may affect the performance of the product.

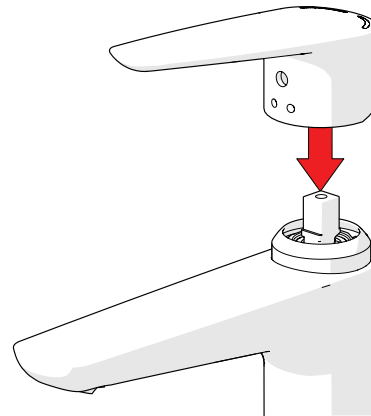
SIDE LEVER



1. Handle Placement

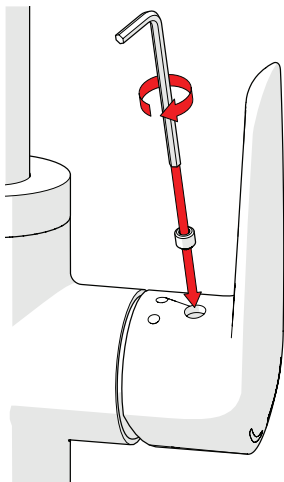
- Push handle onto cartridge stem.

HOB LEVER



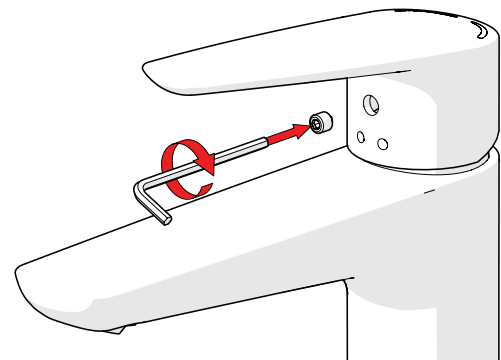
1. Handle Placement

- Push handle onto cartridge stem.



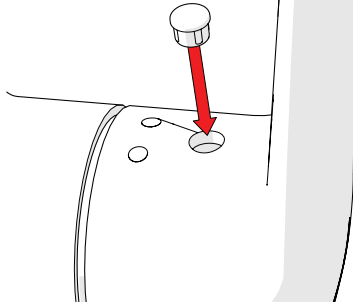
2. Grub Screw

- Use supplied Allen Key to tighten Grub Screw into cartridge stem. Ensure the handle is secure

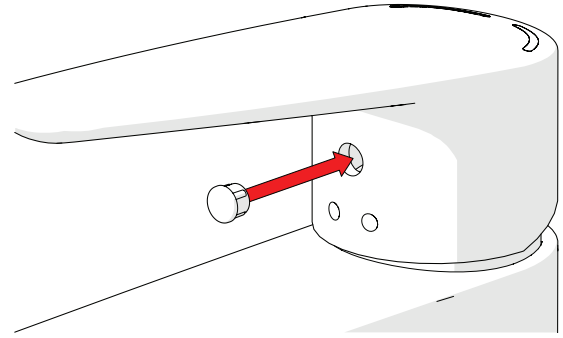


2. Grub Screw

- Use supplied Allen Key to tighten Grub Screw into cartridge stem. Ensure the handle is secure



3. Cap
- Push fit Grub Screw Cap.



3. Cap
- Push fit Grub Screw Cap.

WARRANTY

Galvin Engineering products are covered under our Manufacturer's Warranty. Galvin Engineering products must be installed in accordance with the installation instructions and in accordance with AS 3500 and NCC Volume Three, relevant Australian Standards and local authorities applicable to product being installed. Water and electrical supply conditions must also comply to the applicable national and/or state standards, failing to comply with these provisions may void the product warranty and affect performance of the product.

Please visit www.galvinengineering.com.au to view the full warranty, our Installation Compliance and Maintenance & Cleaning information as well as any other additional information.